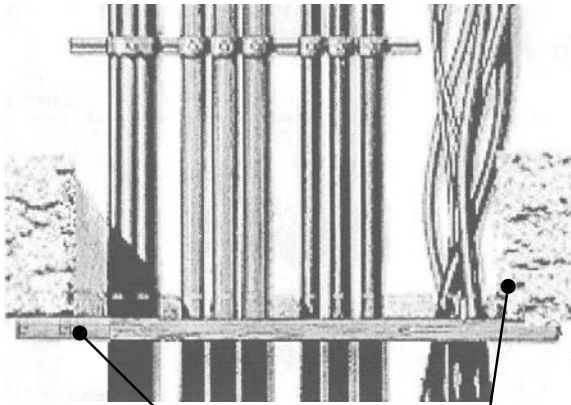




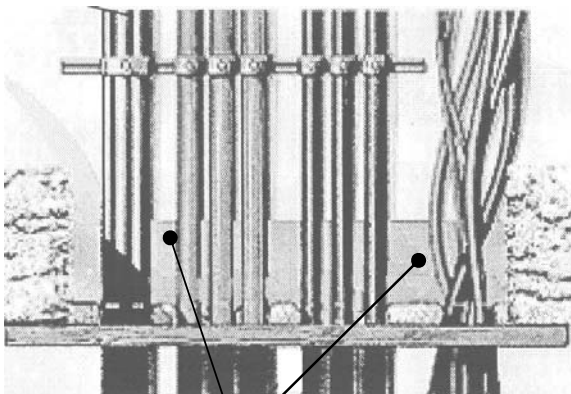
INSTALLATION DETAILS



PLYWOOD/RIGID BOARD

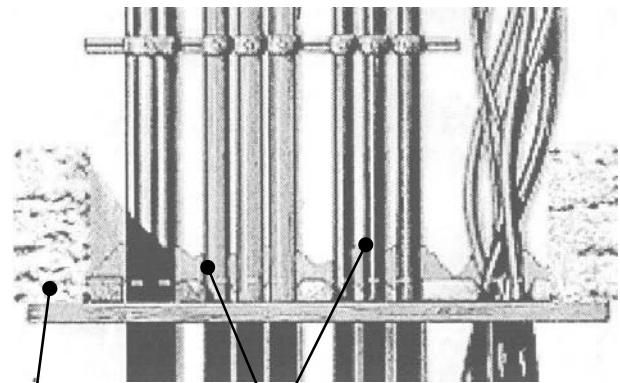
WALL/FLOOR

4. Mix the contents thoroughly using a paddle mixer to produce uniform slurry, suitable for trowelling or pouring in-place. Do not mix more material than will be used within sixty (60) minutes.
5. Pour or trowel in-place the required thickness of Monokote[®] Type HPM mix. Work it in to all voids and then trowel the surface to provide a neat, smooth, finished surface appearance.
6. Clean up uncured material with fresh water.
7. Trowel finish according to the UL listed thickness.



63.5 MM THICK
MONOKOTE[®] TYPE HPM

1. Remove all loose dirt, dust, oil, and any other foreign substances that would impair adhesion to the penetrating items and the construction substrate being penetrated.
2. Dam the opening to be fire stopped using plywood, foam board or any other rigid material to act as shuttering. To prevent Monokote[®] Type HPM from sticking to the forms, cover them with plastic sheeting or apply an appropriate form release agent.
3. Add approximately 8 litres of water to one 20 kg bag of Monokote[®] Type HPM trowelable fire stop compound. Only clean, potable water, free of any contaminants should be used.

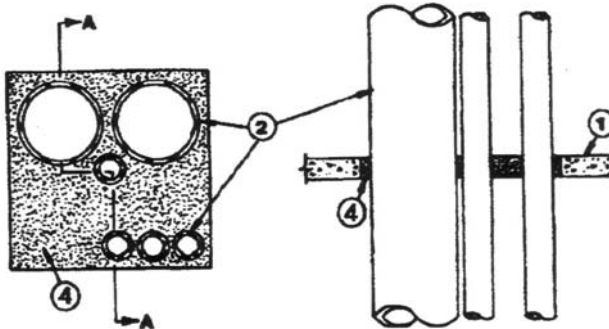


WALL/FLOOR

CABLES

8. Leave the completed fire stop seal undisturbed for 8 to 10 hours to cure. Forms (shuttering) may be removed after 24 hours. Full cure takes 28 days.
9. Monokote[®] Type HPM product and substrate application temperature range is 40 °F (4.4 °C) minimum and 110 °F (43 °C) maximum.
10. Monokote[®] Type HPM yield is dependent on the amount of water added, method and duration of mixing. Using more water within the specified limits will increase the yield, as will longer mixing time and mechanical mixing. Typically, one 20 kg bag of Monokote[®] Type HPM mixed with 8 litres of water mixed with mechanical means will yield approximately 0.03 m³.

UNDERWRITERS LABORATORIES, INC. (UL) LISTING



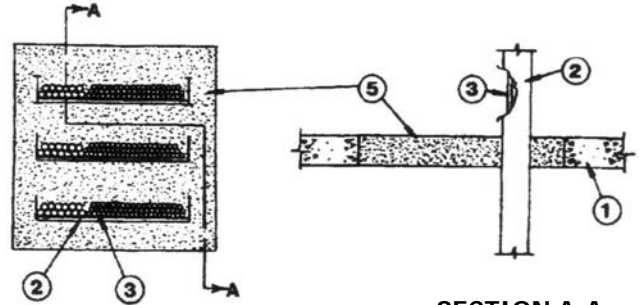
SECTION A-A

SYSTEM NO. C-AJ-1178
F RATING – 3 HR

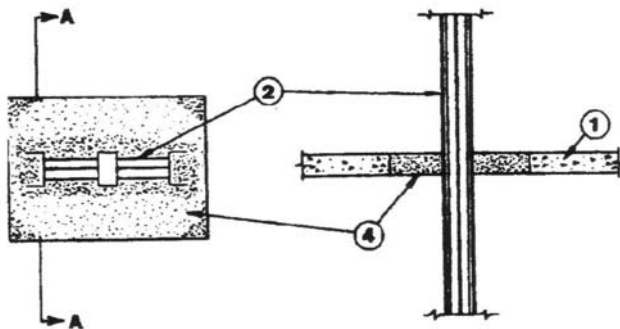
1. Floor or Wall Assembly
2. Pipe, Conduit or Tubing
3. Form (Shuttering) – Not Shown
4. Monokote® Type HPM

SYSTEM NO. C-AJ-4021
F RATING – 3 HR

1. Floor or Wall Assembly
2. Cable Tray
3. Cables
4. Forms (Shuttering) – Not Shown
5. Monokote® Type HPM



SECTION A-A



SECTION A-A

SYSTEM NO. C-AJ-6010
F RATING – 3 HR

1. Floor or Wall Assembly
2. Busway
3. Form (Shuttering) – Not Shown
4. Monokote® Type HPM



Sales Offices:

DAMMAM
P.O. Box 7137, Dammam 31462, Saudi Arabia
Tel.: (03) 847-1450, Fax: (03) 847-1575
Telex: 803144 KASFIN SJ
E-Mail: avi@avi-sa.com

RIYADH
P.O. Box 61531
Riyadh 11575
Saudi Arabia
Tel. & Fax: (01) 478-4440

Manufactured in Saudi Arabia by:
ARABIAN VERMICULITE INDUSTRIES

JEDDAH
P.O. Box 408, Jeddah 21411, Saudi Arabia
Tel.: (02) 653-1333 / (02) 651-5615,
Fax: (02) 653-0588