

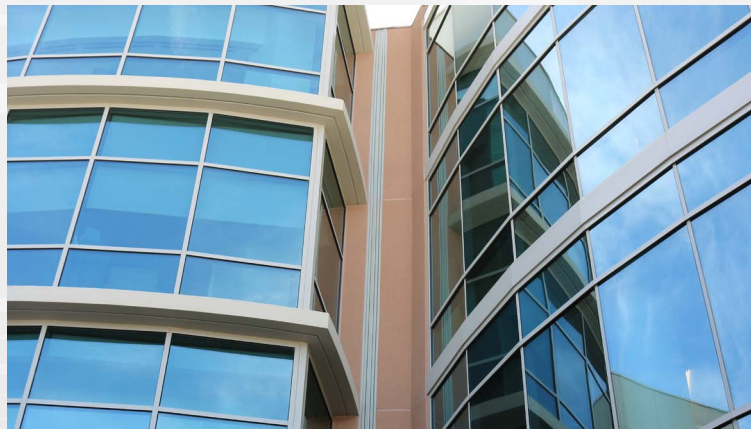
EXPANSION JOINT & FIRESTOPPING SOLUTIONS FOR

DRYWALL

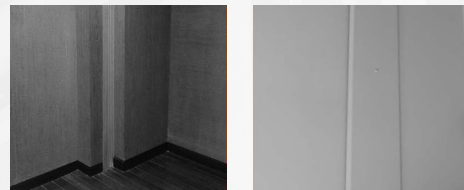
APPLICATIONS



BUILDING SAFETY PRODUCTS



Balco, the renowned manufacturer of architectural products, offers a wide range of innovative expansion and seismic joint covers and fire barriers designed to preserve the safety of commercial buildings and their occupants, with worldwide service and distribution.



metacaulk®

FIRESTOP SOLUTIONS

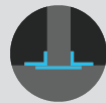


RectorSeal, the global leader in life safety and passive fire protection, offers a complete firestopping solution line: Metacaulk®. With full online resources, advanced testing, and international reach, Metacaulk® is the worldwide forerunner in firestop technology.



EXPANSION JOINT SYSTEMS

FOR DRYWALL



EXPANSION JOINT SYSTEM

6GW Glide Plate - Recessed

APPLICATION

- Wall covers flush with drywall

FEATURES

- Easy to clean
- No exposed fasteners
- Paintable option available (contact factory for details)*
- Glide plate can be formed to custom corners
- Flush mount installation only
- Ships in 10' (3m) lengths

PERFORMANCE

- Seismic, thermal and wind movement per ASTM E1399 standard



- Contributes to LEED® credits

JOINT SIZES

1-8"+ (25-200mm+)

MOVEMENT

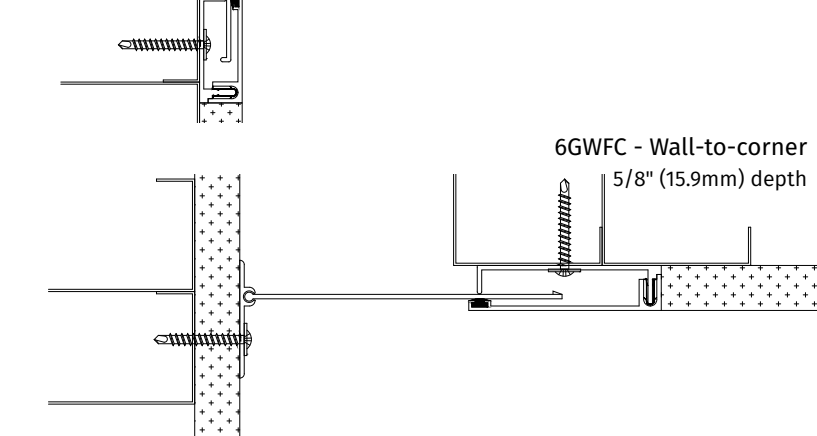
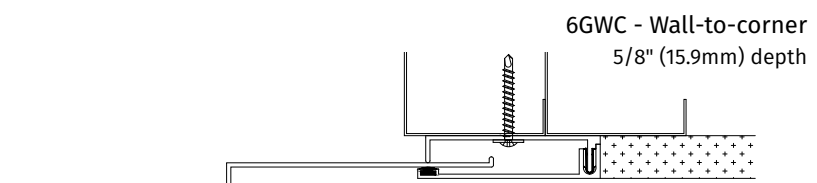
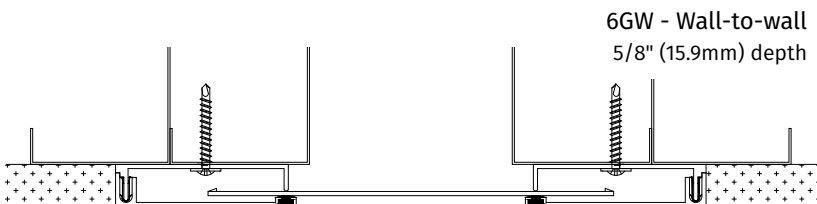
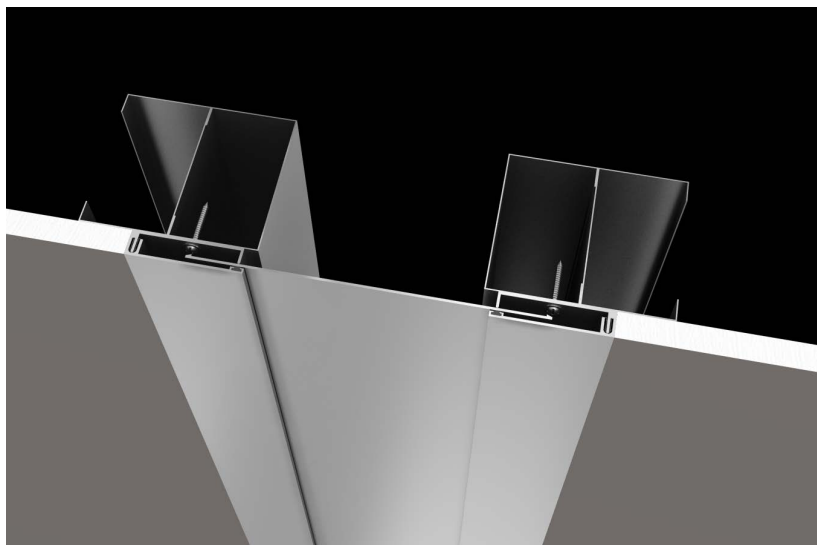
±50% to ±100% Expansion/Contr.



±50% to ±100% Lateral Shear



Vertical Shear (Contact Factory)



Shown: 2-3" (50-75mm) joint

Stainless steel versions: SS6GW & SS6GWC

*Subject to additional charges and extended lead times.



EXPANSION JOINT SYSTEM

75FWG Elastomeric Seal - Surface Mount

APPLICATION

- Surface mount interior drywall cover, with an elastomeric seal

FEATURES

- Extruded santoprene seal
- Surface mount installation only
- Tape/Feather (by others)
- Multiple santoprene color options available*
- Ships in 10' (3m) lengths

PERFORMANCE

- Thermal movement per ASTM E1399 standard



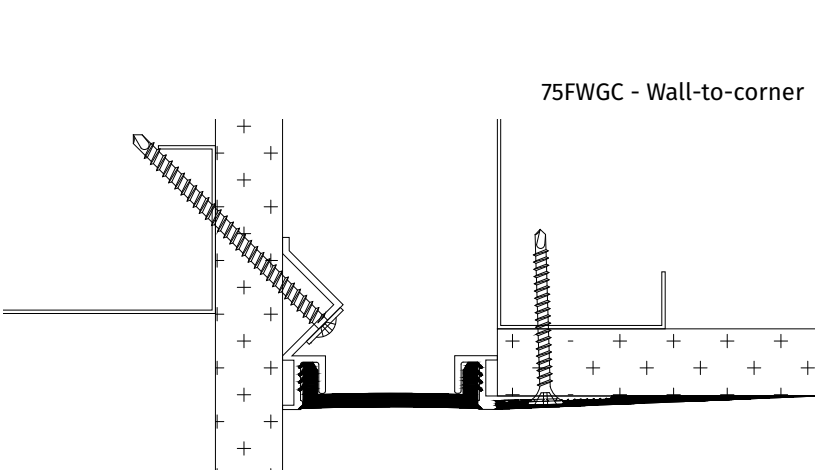
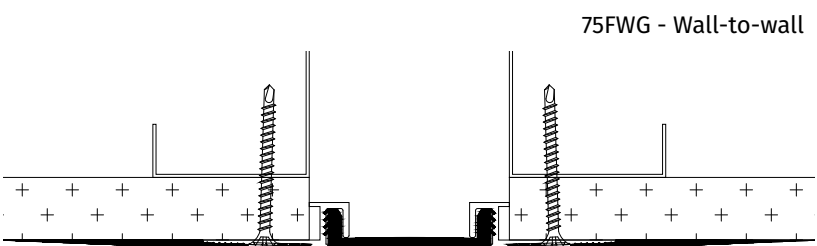
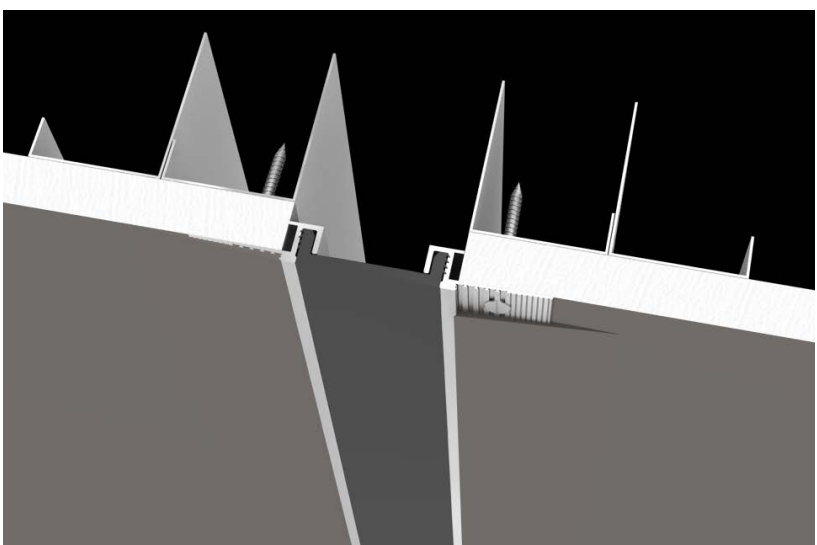
- Contributes to LEED® credits

JOINT SIZES

1-2" (25-50mm)

MOVEMENT

±25% Expansion/Contr.

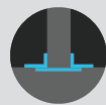


Shown: 2" (50mm) joint

Also see products 75FWPE, 95GW and PSW.

*See page 14.





EXPANSION JOINT SYSTEM

GCVS

Face Seal - Surface Mount - 100% Mvmnt

APPLICATION

- Surface mount elastomeric interior wall seal

FEATURES

- Extruded santoprene seal (Silicone option available)*
- Surface mount installation only
- Tape/Feather (by others)
- Multiple santoprene color options available*
- Aluminum ships in 10' (3m) lengths; santoprene ships in up to 60' (18.3m) lengths

PERFORMANCE

- Seismic, thermal and wind movement per ASTM E1399 standard



- Contributes to LEED® credits

JOINT SIZES

2-10" (50-250mm)

MOVEMENT

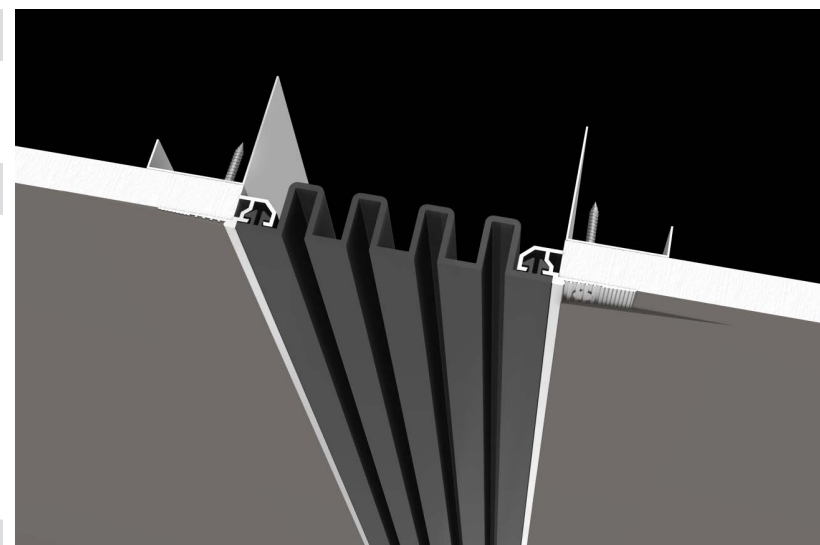
±100% Expansion/Contr.



±100% Lateral Shear**



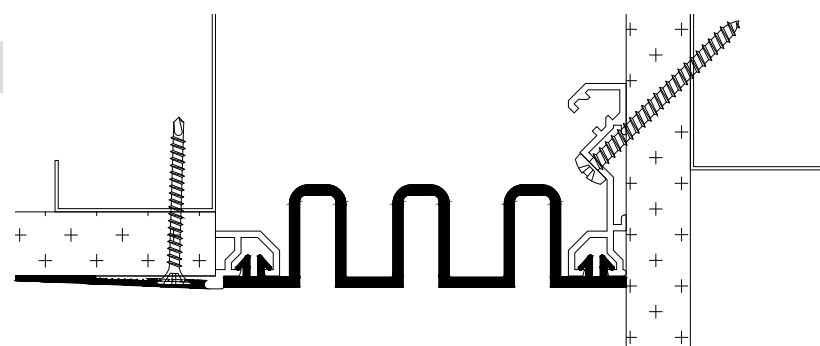
Vertical Shear (Contact Factory)



GCVS - Wall-to-wall

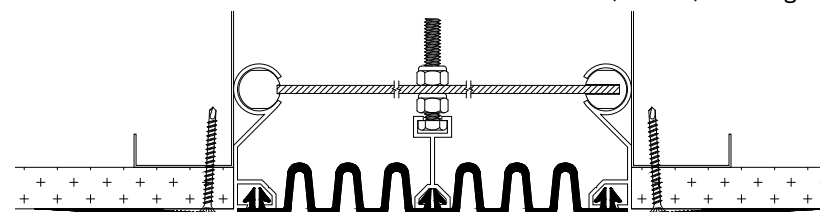


GCVSC - Wall-to-corner



Shown: 4" (100mm) joint

GCVS - 6" (150mm) and larger



*See page 14.

**Reduced for joints over 5" (125mm).

Also see product TCVS.



EXPANSION JOINT SYSTEM

GCWW

Face Seal - Surface Mount - 50% Mvmnt

APPLICATION

- Surface mount elastomeric interior wall seal

FEATURES

- Extruded santoprene seal (Silicone option available)*
- Surface mount installation only
- Tape/Feather (by others)
- Multiple santoprene color options available*
- Aluminum ships in 10' (3m) lengths; santoprene ships in up to 60' (18.3m) lengths

PERFORMANCE

- Seismic, thermal and wind movement per ASTM E1399 standard



- Contributes to LEED® credits

JOINT SIZES

2-10" (50-250mm)

MOVEMENT

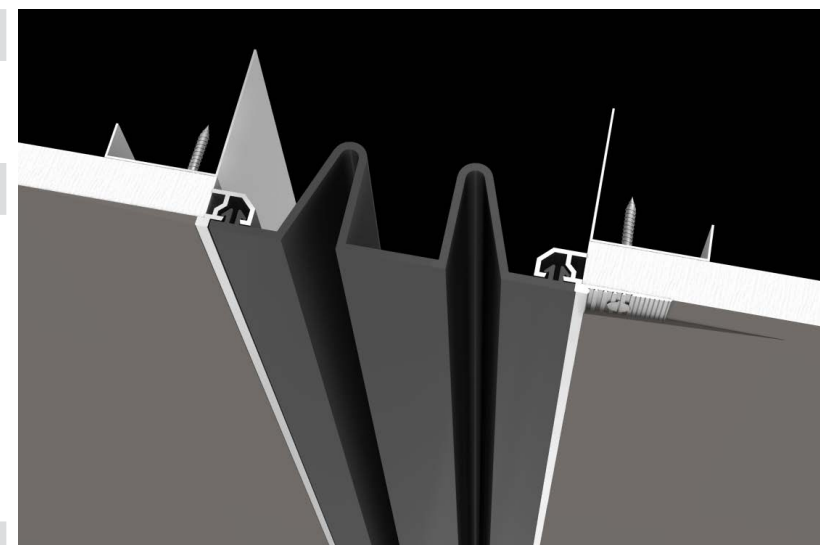
±50% Expansion/Contr.



±50% Lateral Shear**



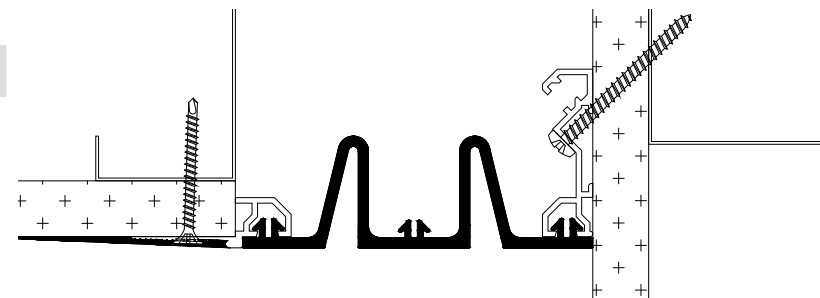
Vertical Shear (Contact Factory)



GCWW - Wall-to-wall

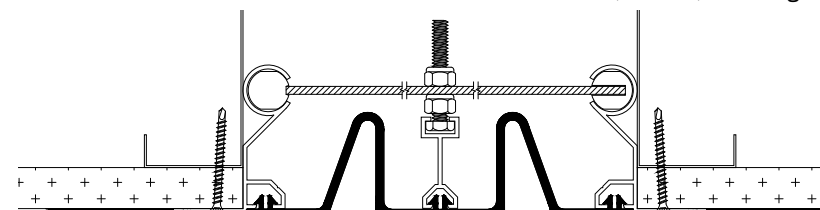


GCWC - Wall-to-corner



Shown: 4" (100mm) joint

GCWW - 6" (150mm) and larger

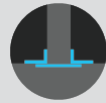


*See page 14.

**Excludes joints over 5" (125mm).

Also see products TCWW and IS.





EXPANSION JOINT SYSTEM

DRYWALL

WD

Snap-on Surface Plate

APPLICATION

- Surface mount wall cover with snap-on exposed plate

FEATURES

- Easy to clean
- Low profile
- No exposed fasteners
- Paintable option available (contact factory for details)*
- Surface mount installation only
- Ships in 10' (3m) lengths

PERFORMANCE

- Seismic, thermal and wind movement per ASTM E1399 standard



- Contributes to LEED® credits

JOINT SIZES

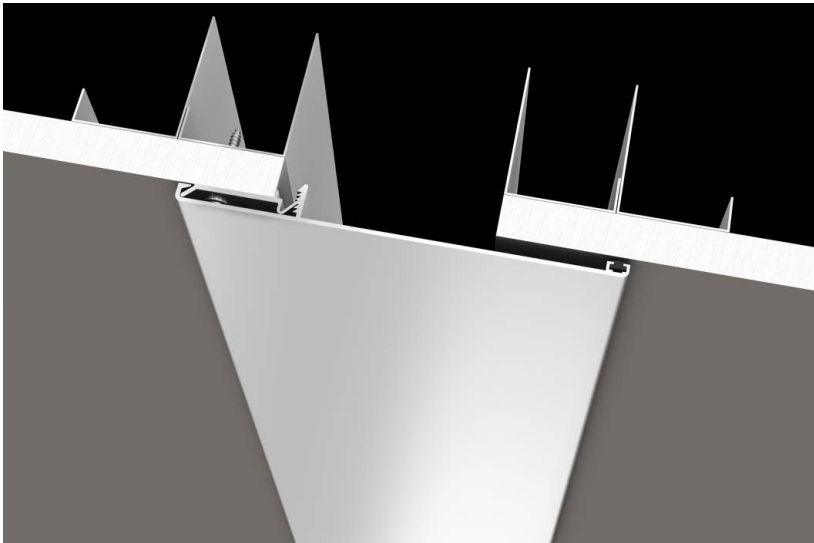
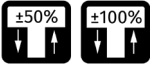
1-4" (25-100mm)

MOVEMENT

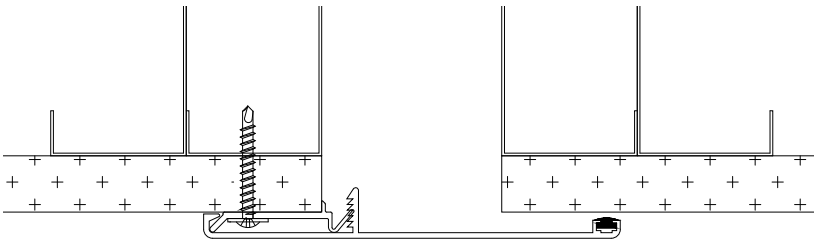
±50% Expansion/Contr.



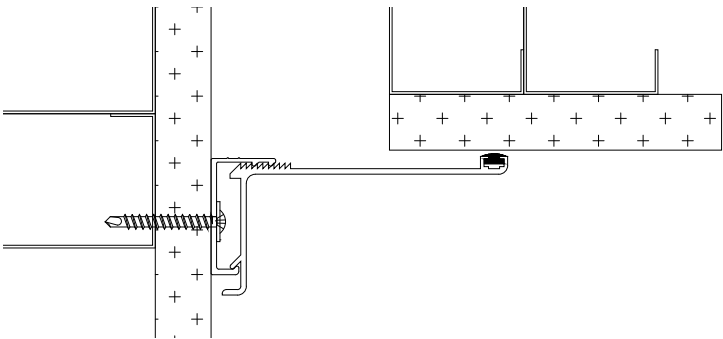
±50% to ±100% Vertical Shear



WD - Wall-to-wall



WDC - Wall-to-corner

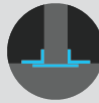


Shown: 2" (50mm) joint

Stainless steel versions: SSWD & SSWDC

Also see products CM and FC.

*Subject to additional charges and extended lead times.



EXPANSION JOINT SYSTEM

DRYWALL

CE

Silicone Compression Seal

APPLICATION

- Elastomeric compression seal flush with surrounding wall

FEATURES

- Premium silicone, water-tight compression seal
- No exposed fasteners
- Adhered in place with silicone sealant
- Multiple silicone color options available*
- Ships in up to 100' (30.5m) lengths

PERFORMANCE

- Seismic, thermal and wind movement per ASTM E1399 standard



- Contributes to LEED® credits

JOINT SIZES

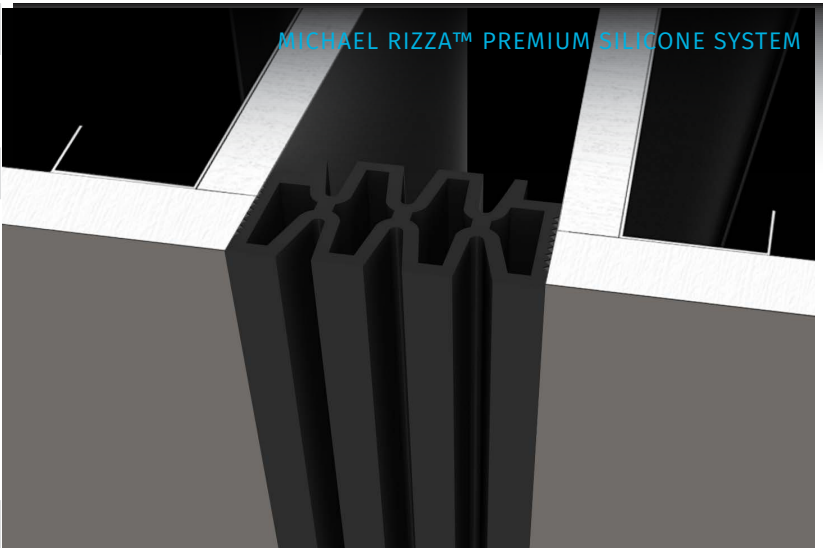
1-4" (25-100mm)

MOVEMENT

Expansion/Contr. (Contact Factory)

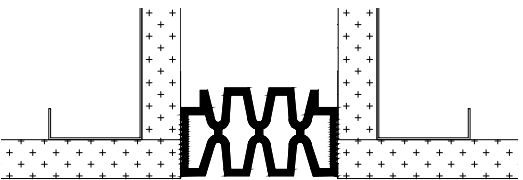


Lateral Shear (Contact Factory)



MICHAEL RIZZA™ PREMIUM SILICONE SYSTEM

CE - Wall-to-wall

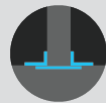


Shown: 2" (50mm) joint, smooth surface application side (reverse seal for brick and block application)

Also see product TCWW.

*See page 14.





ACOUSTICAL CEILING EXPANSION JOINT SYSTEM

75FCA

Smooth Face Seal

APPLICATION

- Ceiling cover flush with acoustical tiles, with an elastomeric seal

FEATURES

- Extruded santoprene seal
- No exposed fasteners
- Flush mount installation only
- Multiple santoprene color options available*
- Ships in 10' (3m) lengths

PERFORMANCE

- Thermal movement per ASTM E1399 standard



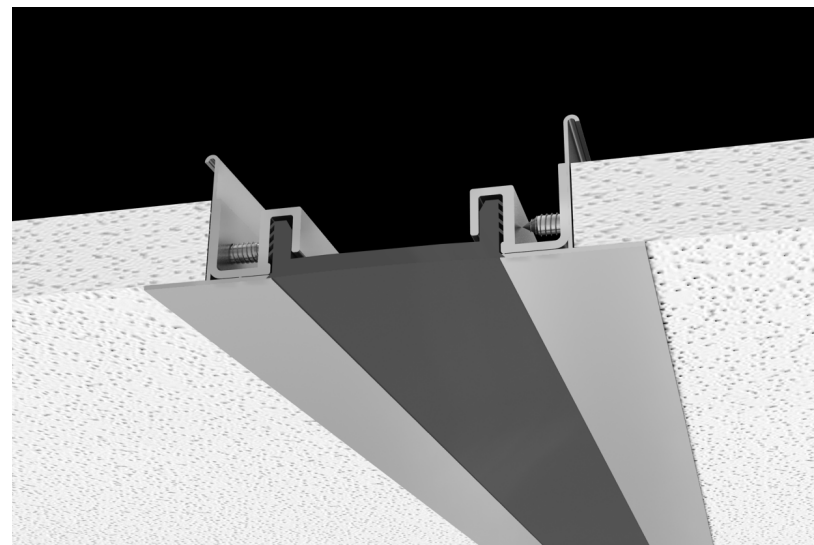
- Contributes to LEED® credits

JOINT SIZES

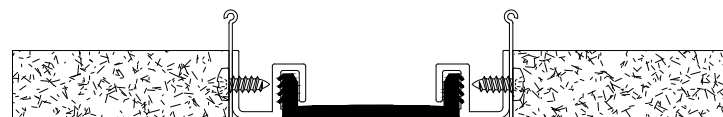
1-2" (25-50mm)

MOVEMENT

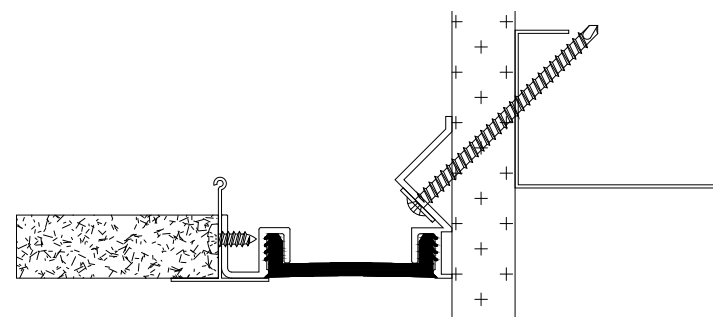
±25% Expansion/Contr.



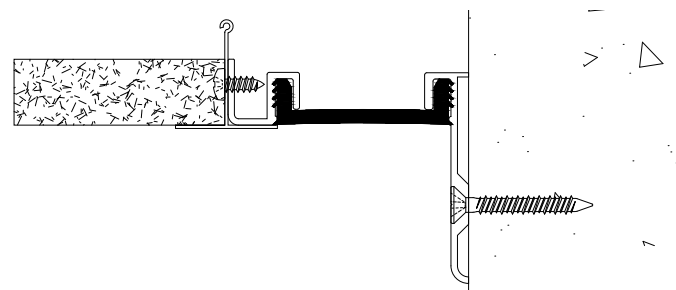
75FCA - Ceiling-to-ceiling



75FCAC - Ceiling-to-wall



75FCACE - Wall-to-corner



Shown: 2" (50mm) joint

*Subject to additional charges and extended lead times.



ACOUSTICAL CEILING EXPANSION JOINT SYSTEM

AC

Accordion Face Seal

APPLICATION

- Elastomeric ceiling seal flush with acoustical tiles

FEATURES

- Extruded santoprene seal
- No exposed fasteners
- Flush mount installation only
- Multiple santoprene color options available*
- Aluminum ships in 10' (3m) lengths; santoprene ships in up to 60' (18.3m) lengths

PERFORMANCE

- Seismic, thermal and wind movement per ASTM E1399 standard



- Contributes to LEED® credits

JOINT SIZES

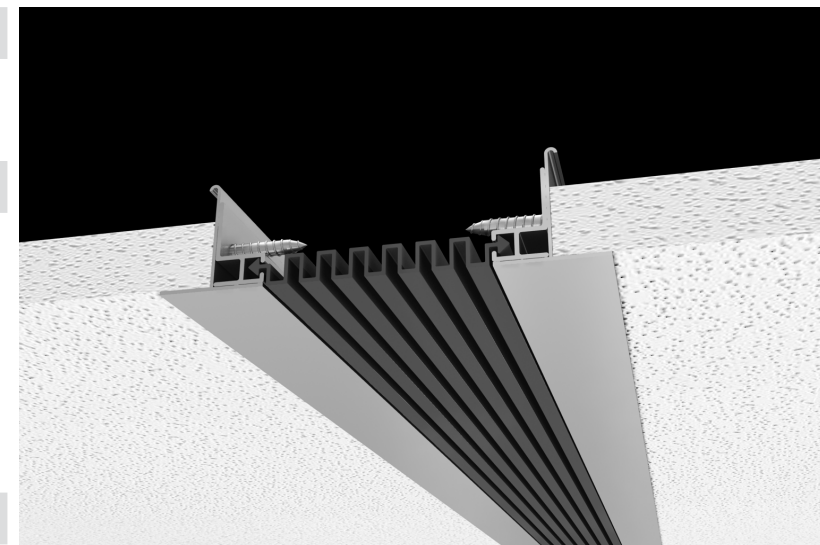
1-3" (25-75mm)

MOVEMENT

±100% Expansion/Contr.



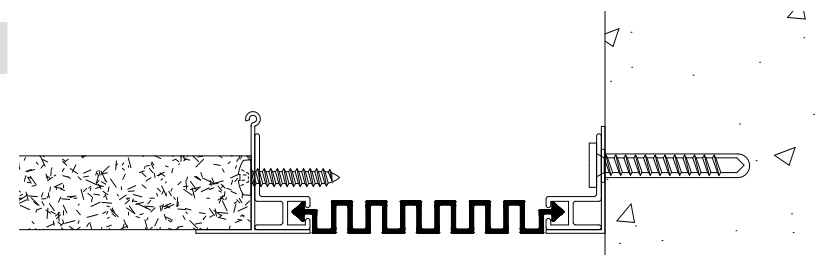
±100% Vertical Shear



AC - Ceiling-to-ceiling



ACL - Ceiling-to-wall



Shown: 2" (50mm) joint

Also see products ACVS and ACWW.

*See page 14.



DRYWALL PARTITION CLOSURE SEAL

APPLICATION

- Seal between partition walls and exterior curtain walls

FEATURES

- Premium extruded silicone
- Multiple silicone color options available*
- Optional clear, anodized, extruded aluminum bases provide various closure and attachment options
- Easy installation
- Aluminum ships in 10' (3m) lengths, silicone ships in 100' (30.5m) lengths
- No mechanical fasteners required

PERFORMANCE

- Thermal and wind movement tested per standard ASTM E1399



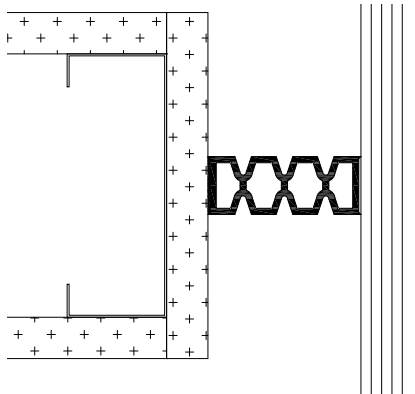
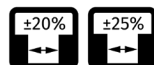
- Sound reduction qualities of up to STC-58 (for double install)
- Contributes to LEED® credits

JOINT SIZES

2" (50mm)

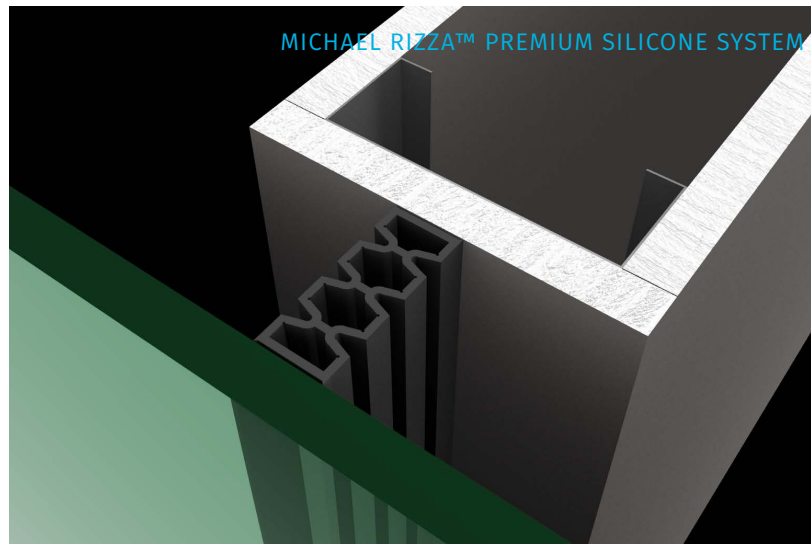
MOVEMENT

±20% to 25%* Expansion/Contr.



PCS-1

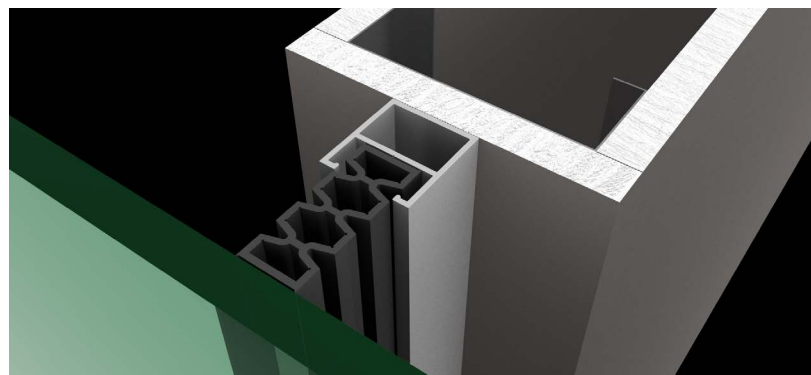
Silicone Seal Only



MICHAEL RIZZA™ PREMIUM SILICONE SYSTEM

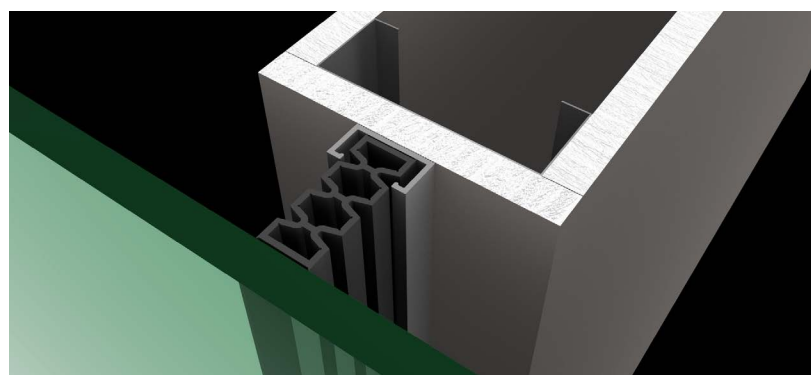
PCS-1B

Silicone Seal & Tube Channel Base Member



PCS-1C

Silicone Seal & C-Channel Base Member



*See page 14.



DRYWALL FIRE BARRIER

APPLICATION

- Versatile, fire-resistant barrier for vertical expansion joints

FEATURES

- Installs without mechanical fasteners or fire caulking
- Minimal depth of 2 1/2" (62.5mm) required for installation
- Ships in 7' (2.1m), tongue and groove lengths for easy splicing and transitioning
- Ideal for use with elastomeric seals

PERFORMANCE

- Fire resistance rating of 1-4 hours tested in accordance with ASTM E1966 and UL 2079
- Seismic, Thermal and Wind movement tested per standard ASTM E 1399



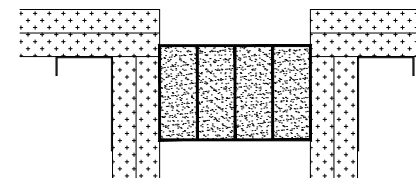
- Contributes to LEED® credits

JOINT SIZES

1-4"* (25-100mm*)

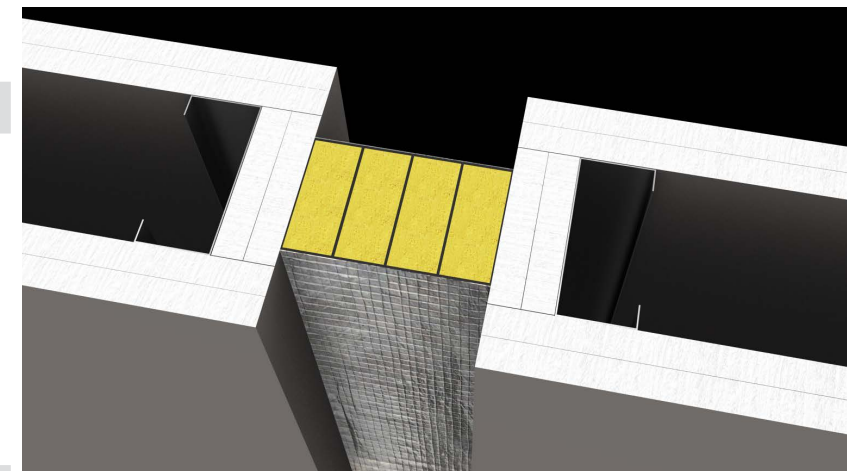
MOVEMENT

±50% to ±100% Expansion/Contr.



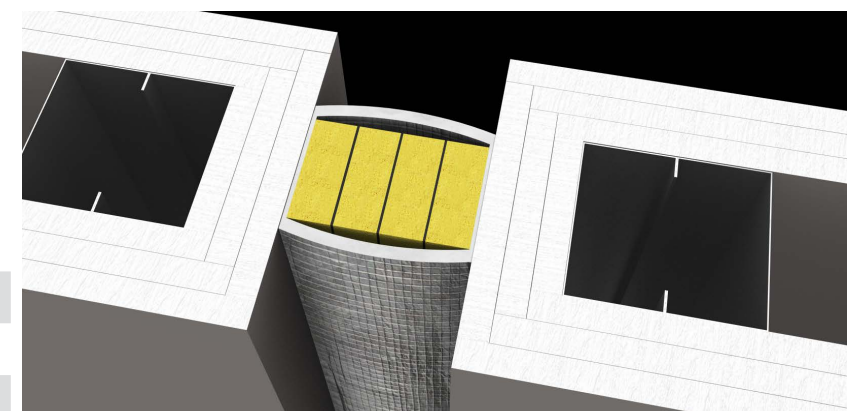
MBW2H

MetaBlock® - 2 Hour



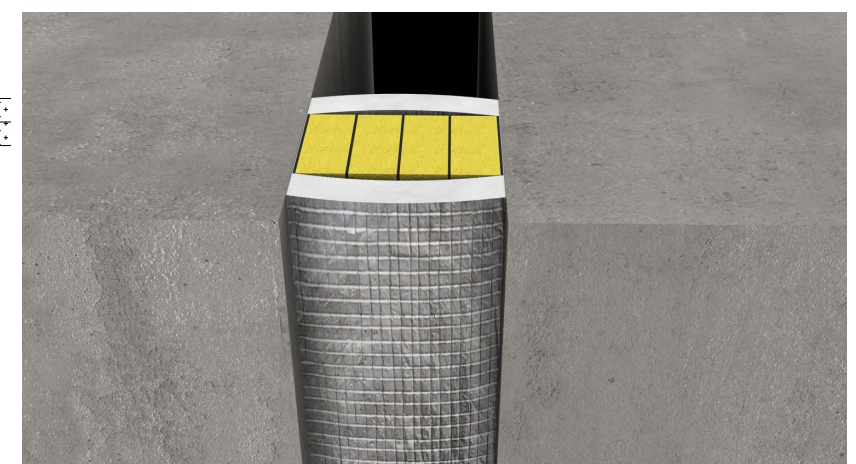
MBW3H

MetaBlock® - 3 Hour



MBW4H

MetaBlock® - 4 Hour



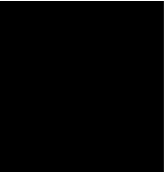
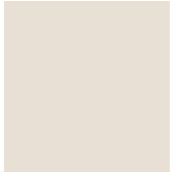
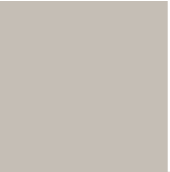
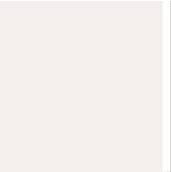
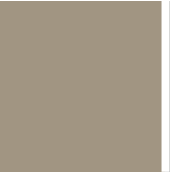







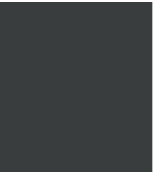
*Joint size availability varies slightly between products.

COLOR CHART




SILICONE OPTIONS

Dow Corning® 790

“Other” colors subject to 100' (30.5m) per-product minimum order quantity or set up charges, applicable to all Michael Rizza™ (RR, RW & PCS) products. For EV & IS, standard colors are Black, White, Gray, Bronze & Sandstone. For BCS, all colors are standard.

STANDARD	OTHER					
						
Black	Precast White	Limestone	White	Natural Stone	Gray	Bronze
						
	Sandstone	Adobe Tan	Dusty Rose	Rustic Brick	Blue Spruce	Charcoal

SANTOPRENE OPTIONS

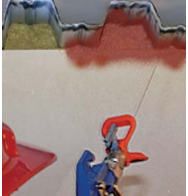
					*White not available for floor applications.
White	Tan	Gray	Bronze	Black	

metacaulk®

FIRESTOPPING
SOLUTIONS

FOR DRYWALL

Additional Drywall Expansion Joint Systems available; visit balcousa.com to learn more. Standard CAD details available online. Many Expansion Joint Systems may come in larger sizes. For specific or custom details, contact Balco directly. Color chart is for reference only. Contact factory for physical samples, as colors may vary.



METACAULK® FIRESTOP SPRAYS



METACAULK® FIRESTOP SEALANTS




Metacaulk® 1200

Spray & caulk firestop Mastic

Code	Description - (Red)	Qty.
66379	5 gal. spray	1
66292	20.2 oz. caulk grade	12
66015	30 oz. caulk grade	12
66387	5 gal. caulk grade	1
66529	5 gal. spray (USA)	1
Code	Description - (White)	Qty.
66527	5 gal. spray	1
66294	20.2 caulk grade	12
66525	30 oz. caulk grade	12
66526	5 gal. spray (USA)	1
66386	5 gal caulk grade	1

APPLICATION • Cures to an elastomeric membrane seal that is suitable for dynamic movement • Mastic spray provides a fast, economical means of installation on long joint runs **RECOMMENDED FOR** • Construction joints such as: top of the wall, curtain wall perimeter, expansion, and control • Cable trays • HVAC Ductwork • Deflection Track Wall Systems



- 


- FEATURES**
- Extremely flexible
 - Excellent dynamic movement
 - Excellent freeze-thaw
 - STC rating 65
 - UL Classified up to 4 hrs
 - Tested in accordance with ASTM E814 (UL 1479) & ASTM E1966 (UL 2079)
 - Mold inhibitor tested to ASTM G21
 - 3 year shelf life
 - Color: Red or White






*FBC™ System Compatible™ indicates that this product has been tested, and is monitored on an ongoing basis, to assure its chemical compatibility with FlowGuard Gold®, BlazeMaster® and Corzan® pipe and fittings.

**FBC®, FlowGuard Gold®, BlazeMaster® and Corzan® are licensed trademarks of The Lubrizol Corporation.

Metacaulk® MC 150+

General purpose firestop sealant

Code	Description	Qty.
66648	10.3 oz. cartridge	12
66383	30 oz. cartridge	12
66385	20.2 oz. foil pack	12
66389	5 gal.	1

- 


- FEATURES**
- Flexible
 - Non-sag
 - UL Classified up to 4 hrs.
 - 3 year shelf life
 - Tested in accordance with ASTM E814 (UL 1479) & ASTM E1966 (UL 2079)
 - STC rating 65
 - Mold inhibitor tested to ASTM G21
 - Color: Red

APPLICATION • One component, general purpose fire-rated sealant and smoke seal for construction joints and through-penetrations on both horizontal and vertical surfaces • Non-sag caulking grade sealant that is easy to apply as well as to retrofit • Can be used in areas under constant vibration or movement

RECOMMENDED FOR

- Metal pipes • Insulated pipes
- Fiberglass and plastic pipes • Wall construction joints
- Power and telephone cables



*FBC™ System Compatible™ indicates that this product has been tested, and is monitored on an ongoing basis, to assure its chemical compatibility with FlowGuard Gold®, BlazeMaster® and Corzan® pipe and fittings.

**FBC®, FlowGuard Gold®, BlazeMaster® and Corzan® are licensed trademarks of The Lubrizol Corporation.





METACALK® FIRESTOP STRIPS

Blaze Foam™

Code	Description	Qty.
66024	48" x 5/8" x 1.5"	40 pcs.

- CLASSIFIED
UL
c US

FEATURES

 - Easy one step installation
 - For 1 & 2 hr rated gypsum walls
 - No mechanical fastening required
 - Tested in accordance with ASTM E1966 (UL 2079)
 - Highly intumescent
 - STC rating 64
 - L Rating < 1 CFM/LF



Intumescent compressible firestop foam

APPLICATION • Intumescent compressible foam used to firestop head of wall, wall to wall and bottom of wall joint applications both dynamic and static • Designed for installation within fire resistive joints with up to 2 hours F rating

RECOMMENDED FOR

- Head of Gypsum Wall, Wall to Wall and Bottom of Wall joint applications both dynamic and static



US Patent No. 6,207,085



METACALK® SMOKE SEALANTS

SAS Sealant

Code	Description	Qty.
66652	20.2 oz. foil pack	12
66650	5 gal.	1

Tested to
ASTM E84



- FEATURES**
- Meets LEED requirements
 - Excellent for large openings
 - Impedes sound transfer
 - Water clean up
 - Easy to dispense
 - Use both vertically or horizontally
 - Interior application
 - STC rating 69
 - 3 year shelf life
 - Color: White

Smoke & Acoustic, High-grade acrylic latex

APPLICATION • Provides a permanent seal for penetrations, membrane openings and static or dynamic joints in smoke or sound rated assemblies

- In the event of a fire it will prevent the movement of smoke and impede the transfer of sound in non-fire rated assemblies

RECOMMENDED FOR

- Metallic and nonmetallic pipes
- Outlet and receptacle boxes
- Membrane penetrations
- Head of wall
- Bottom of wall
- Wall to wall joints



*FBC™ System Compatible™ indicates that this product has been tested, and is monitored on an ongoing basis, to assure its chemical compatibility with FlowGuard Gold®, BlazeMaster® and Corzan® pipe and fittings.

**FBC®, FlowGuard Gold®, BlazeMaster® and Corzan® are licensed trademarks of The Lubrizol Corporation.

MORE FROM BALCO:



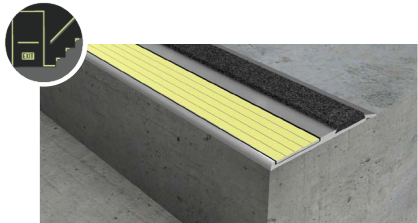
STAIR NOSINGS



MATS AND GRIDS



TRENCH AND ACCESS



ILLUMITREAD™ EGRESS



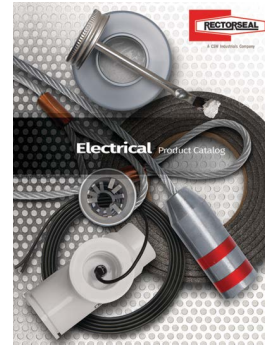
Balco, Inc. 2626 S Sheridan, PO Box 17249, Wichita, Kansas 67217
Phone 316.945.9328 800.767.0082 balcousa.com

Balco, the logos and other trademarks are property of Balco, Inc., its affiliates or its licensors and are protected by copyright, trademark and other intellectual property laws, and may not be used without permission.

Balco, Inc. reserves the right to change specifications without prior notice.

© 2012-2019 Balco, Inc. All rights reserved.

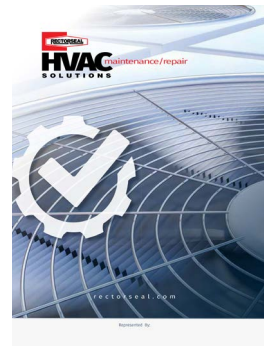
MORE FROM RECTORSEAL:



Electrical



Plumbing



HVAC-R



A CSW Industrials Company

RectorSeal® 2601 Spenwick Drive, Houston, Texas 77055
Phone 800.231.3345 rectorseal.com

RectorSeal, the logos and other trademarks are property of RectorSeal, LLC, its affiliates or its licensors and are protected by copyright, trademark and other intellectual property laws, and may not be used without permission.

RectorSeal reserves the right to change specifications without prior notice.

© 2012-2019 RectorSeal. All rights reserved.